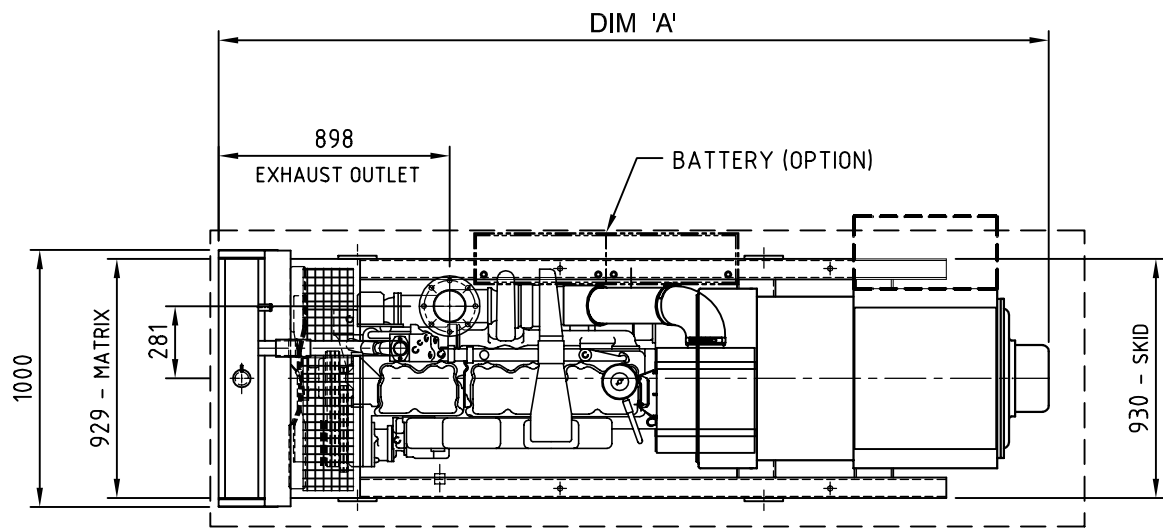


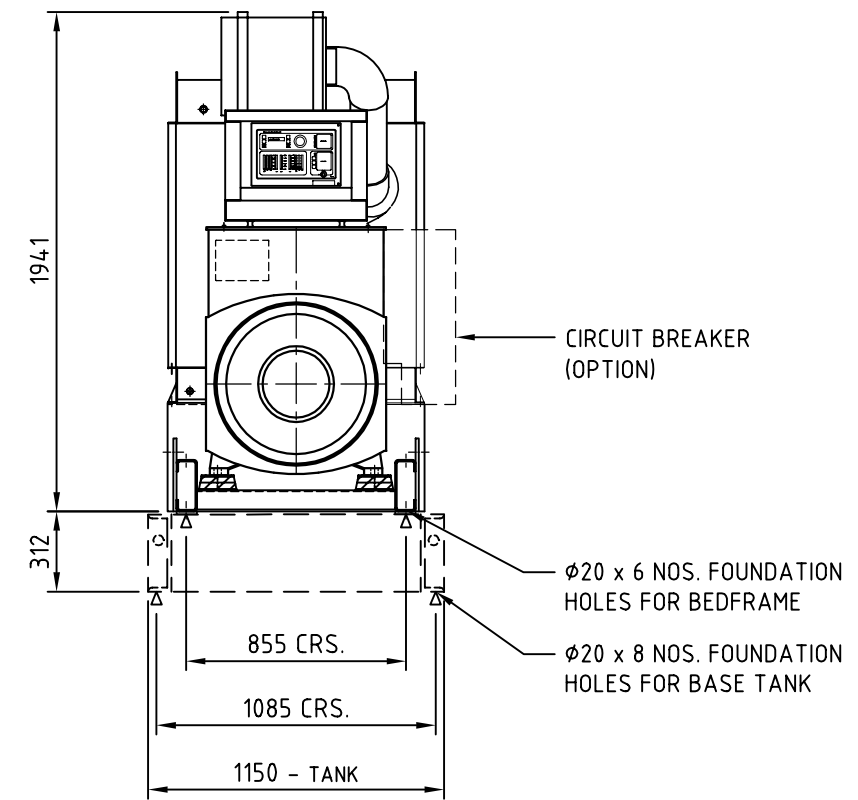
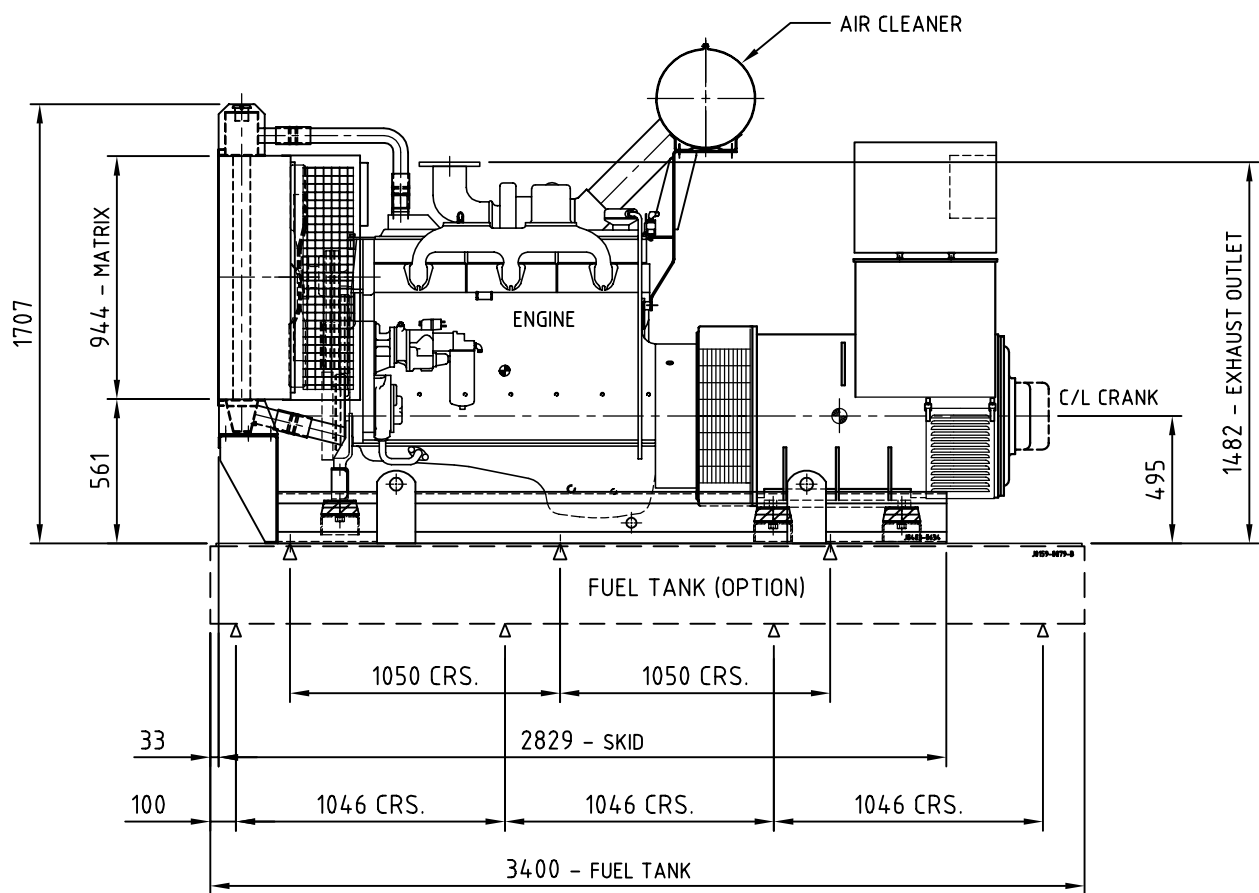
J0500-0462

B

REL NO	LTR	NO	REVISION	ZONE	DR	CHKR	APPROVED	DATE
-	-	1	1ST RELEASE	-	SC	LS	CL	17-JUN-05



	Model	Engine	Alternator	Ambient Temp.	Open Bed (kg)		Open Bed with Fuel Tank (kg)		Tank (Litres)	DIM 'A' (mm)
					Dry Wt.	Wet Wt.	Dry Wt.	Wet Wt.		
50Hz	C440 D5	NTA855 G7	HC5C	40°C	3140	3250	3900	4670	800	3228



METRIC DWG		TOLERANCE UNLESS OTHERWISE SPECIFIED		QTY	ITEM	PART NO.	DWG SIZE	DESCRIPTION OR MATERIAL	REF DES
AUTOCAD DWG		mm	Inch						
DO NOT SCALE PRINT		ANG TOL $\pm 1^\circ$							
DRAWN TO SCALE OF 1/30									
HOLE DIM		THIRD ANGLE PROJECTION		NAME		PROJECT DATE		CUMMINS POWER GENERATION	
0.09 - 4.99 $\pm 0.15/-0.08$		THIS DOCUMENT IS THE PROPERTY OF CUMMINS POWER GENERATION. IT CONTAINS PROPRIETARY AND CONFIDENTIAL INFORMATION WHICH MUST NOT BE DUPLICATED, USED OR DISCLOSED OTHER THAN AS EXPRESSLY AUTHORIZED BY CUMMINS POWER GENERATION OR ITS REPRESENTATIVE		S.CHUA		17-JUN-05		44 PIONEER SECTOR 2 SINGAPORE 628395	
5.00 - 9.99 $\pm 0.20/-0.10$.004 - .200 $\pm 0.06/-0.003$		CHKR <input checked="" type="checkbox"/> L.SNG		17-JUN-05		TITLE GENSET OUTLINE	
10.00 - 17.49 $\pm 0.25/-0.13$.201 - .421 $\pm 0.08/-0.004$		MFG <input type="checkbox"/>		17-JUN-05		SITE CODE	
17.50 - 24.99 $\pm 0.30/-0.13$.422 - .703 $\pm 0.10/-0.005$		APPROVED C.LIM		17-JUN-05		PGS	
		.704 - .999 $\pm 0.12/-0.005$		FOR INTERPRETATION OF DIMENSIONING AND TOLERANCING, SEE ANSI Y14.5M-1982		MODEL FIRST USED ON XXXX		DWG NO. J0500-0462	
								SHEET 1 OF 1	
								DWG SIZE B	

PGS REF: