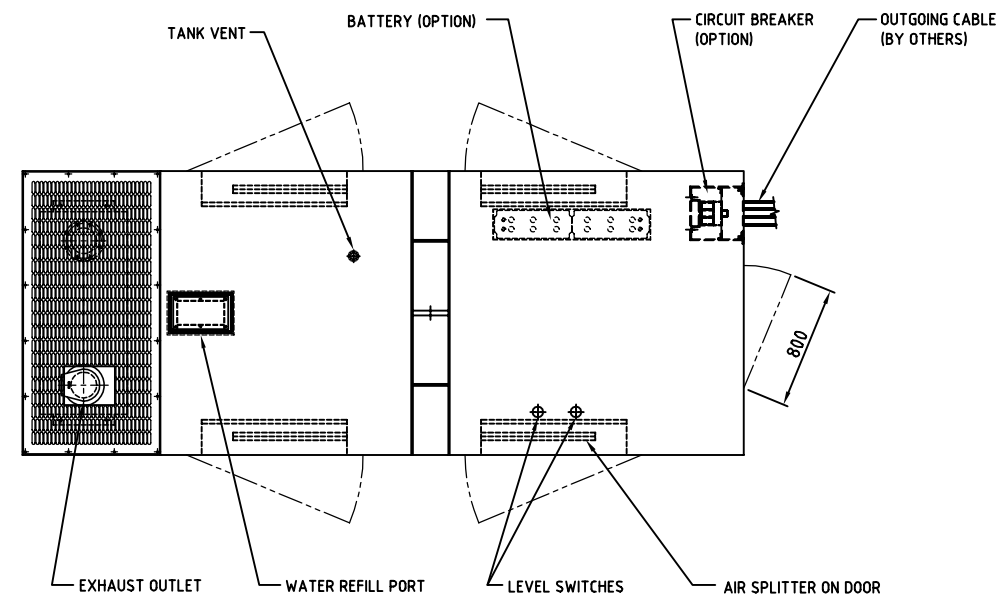
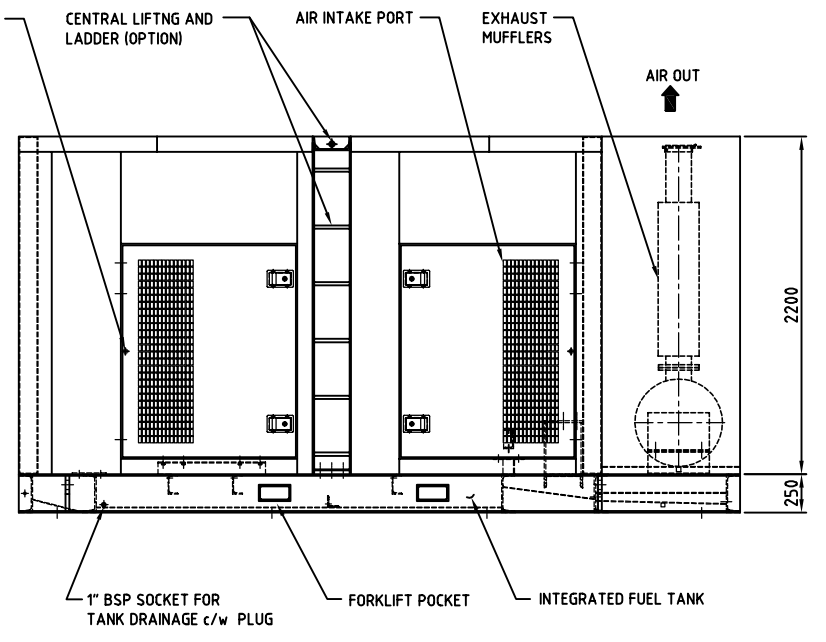
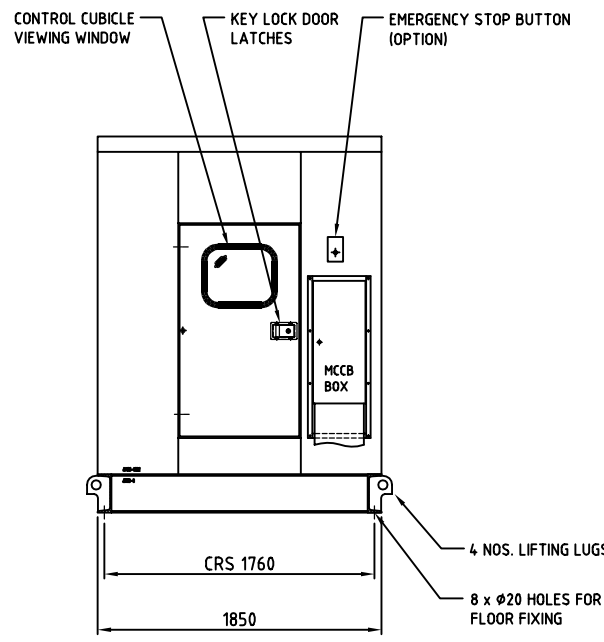
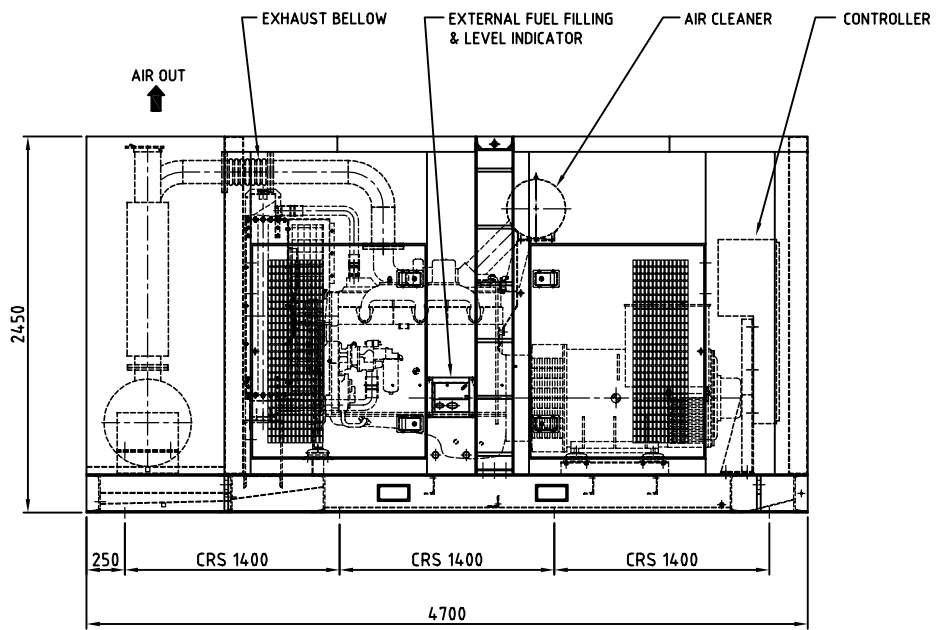


REL NO	LTR	NO	REV SI ON	ZONE	DR	CHKR	APPROVED	DATE
-	-	1	1ST RELEASE	-	SC	LS	CL	24-JUN-05



	Model	Engine	Alternator	Ambient Temp.	Ambient Temp. (Option)	Tank (Litres)	Weight Dry (kg)	Weight Wet (kg)	Noise Level dBA @ 1m
50 Hz	C440 D5	NTA855 G7	HC5C	40°C	50°C	800	5530	6310	85
60 Hz	C400 D6	NTA855 G5	HC4F	40°C	50°C	800	5530	6310	85



DO NOT SCALE PRINT ANG TOL ±1° DRAWN TO 1/25 SCALE	TOLERANCE UNLESS OTHERWISE SPECIFIED mm Inch		SH TO X X	NAME DR - S.CHUA CHKR - LSNG MFG - C.LIM	DATE 24-JUN-05 24-JUN-05 24-JUN-05	CUMMINS POWER GENERATION 44 PIONEER SECTOR 2 SINGAPORE 630036	TITLE ENCLOSURE OUTLINE	SHEET NO. J0500-0468	SHEET OF 1
	HOLE DIM X ±1 .XX ±.25	HOLE DIM 0.08-4.99 +0.15/-0.08 5.00-9.99 +0.20/-0.10 10.00-17.49 +0.25/-0.13 17.50-24.99 +0.30/-0.13	HOLE DIM 0.004-200 ±.006/-0.003 201-421 ±.006/-0.004 422-703 ±.010/-0.005 704-999 ±.012/-0.005	THIS DOCUMENT IS THE PROPERTY OF CUMMINS POWER GENERATION. IT IS TO BE KEPT IN CONFIDENTIALITY AND NOT TO BE REPRODUCED OR DISCLOSED TO ANY OTHER PARTY WITHOUT THE WRITTEN PERMISSION OF CUMMINS POWER GENERATION.	APPROVED - C.LIM				